

## **Historic, Archive Document**

Do not assume content reflects current scientific knowledge, policies, or practices.



1932 PRICE LIST (Cancels all Previous Lists)



# The World's Best Roses And Rare Rock Plants

We are ROSE SPECIALISTS and grow them by the 100,000. We only propagate from heavy producing mother stock, and give the customer the best.

Your patronage is very much appreciated. Give us a trial.

62.71

Sec. 453 1/2 P. L. & R.  
U. S. Postage  
PAID  
Troutdale, Oregon  
Permit No. 5

To

U. S. DEPARTMENT OF AGRICULTURE,

WASHINGTON, D. C.

BUREAU OF PLANT INDUSTRY  
Horticultural Crops and Diseases  
D. C.

8-3591

## Growers of Portland Roses

Wholesale and Retail

ROSES	ROCK PLANTS
DAHLIAS	EVERGREENS
GLADIOLI	PERENNIALS
ANNUALS	FRUIT TREES
POND LILIES	SHADE TREES
FLOWERING SHRUBS	
BEDDING PLANTS	

FROM

## Suhr's Flower Farms

Base Line Road, Mile East of 12-Mile Corner  
Mail, TROUTDALE, OREGON, Route 2, Box 372

Telephone Gresham 5228

Telegraph Address: GRESHAM

As our prices are low, we do not pay postage. No packing charge. No orders less than \$1.00 mailed.

# ROSES

25c postage per dozen on all Roses

Roses, two-year field grown, budded on true Ma-  
netti stock. Not irrigated, and grown in the famous  
Portland Rose district. Price, 35c each; \$3.50 per dozen.

AUGUSTUS HARTMAN, geranium red.  
CRIMSON EMBLEM, bright red.  
COLUMBIA, deep pink.  
CHATEAU DE CLOS VOGUET, darkest velvety red.  
COUNTESS CLONVILLIAM, peach pink, long buds.  
CONSTANCE, bright yellow.  
CASCADIA, a new white waxy rose; also suitable for  
rock banks, half trailing.  
CHEERFUL, shiny pink yellow salmon.  
DUCHESS OF WELLINGTON, saffron yellow, fine.  
FRAU KARL DRUSCHKE, large white.  
GRUSS AN TEPLITZ, free blooming, red.  
GEORGEIOUS, orange yellow flushed with copper, pink.  
GOLDEN OPHELIA, golden yellow, fine buds.  
GOLDEN EMBLEM, sunflower yellow.  
GENERAL McARTHUR, fiery red. Good bloomer.  
HOOSIER BEAUTY, dark crimson.  
HUGH DICKSON, fine red.  
IMPERIAL POTENTATE, rich rosy carmine.  
IRISH ELEGANCE, single apricot pink.  
IRISH FIREFLAME, single gold to crimson.  
J. B. CLARK, large, red, robust grower.  
J. C. THOMAS, salmon yellow in clusters.  
KILLARNEY, double white, wonderful new large white.  
KILLARNEY, brilliant, bright pink.  
KAISERIN AUGUSTA VIKTORIA, lovely white.  
K. O. K., semi-single, scarlet fine bud.  
LADY ALICE STANLEY, coral rose.  
LADY ASHTOWN, fine pink.  
LADY HILLINGTON, deep apricot yellow.  
L. K. BRESLAU, reddish orange.  
LOS ANGELES, flame pink, salmon.  
LA FRANCE, silvery pink.  
MADAME CAROLINE TESTOUT, large pink, the  
Portland rose.  
MADAME ABEL CHATENEY, carmine.  
MADAME MADALINE SOUPERT, yellow.  
MADAME BUTTERFLY, pink, long buds.  
MADAME EDWARD HERRIOTT, coral.  
MRS. JOHN LAING, long-stemmed pink.  
MRS. S. K. RINGE, cream.  
MRS. A. R. WADDELL, apricot.  
MRS. DUNLAP BEST, reddish apricot, fragrant odor.  
MRS. CHAS. RUSSELL, pink, a wonderful cut flower.  
OPHELIA, salmon flesh shaded rose.  
OLD GOLD, copper, long buds.  
PREMIER, rich dark pink.  
QUEEN OF FRAGRANCE, fine pink.  
RAPTURE, dark pink, new.  
RED RADIANCE, red.  
SALMON SPRAY, in clusters. New salmon pink.  
SUNBURST, golden yellow.  
F. T. CROZIER, deep cream.  
W. F. DREER, gold orange pink.  
WINNIE DAVIS, apricot pink.

## Baby Roses, 35c

IDEAL, deep red.  
BABY CRIMSON, crimson.  
BABY THOUSAND SCHOEN, pink.  
BABY JESSIE, cherry red.  
BABY ERNA TESCHENDORF, red.  
TRIUMPH DE ORLEANS, rich red.  
CATHERINE ZEIMET, white.  
GRETA KLUIS, pink.  
EDITH CAVELL, dark red.  
GOLDEN, salmon.  
CHATELAINE, pink.  
MADAME CECELIA BRUNNER, pink, the sweetest  
of all.  
EILEEN POULSEN, pink.

New and Rare Roses, 60c each, \$6 a dozen  
JULIET, deep pink, reverse of petal golden yellow.  
LA CHAMPAGNE, coffee spashed red.  
LOLITA ARMOUR, copperish pink.  
PAXES, LABOR, large golden yellow.  
PINK MOSS.  
PINK RADIANCE.  
SOUVENIR DE GEORGES PERNET, copperish red.  
SUNSTAR, golden tipped, slightly red.  
AUSTRIAN COPPER, briar rose.  
HARRISON YELLOW, briar rose.  
ASPIRANT MARCEL ROYER, straw yellow.  
DORIS DICKSON, reddish copper.  
BETTY, large pink.  
HUMBOLDT, deep coppery pink.  
EARL HAIG, deep red.  
FONTAINE, yellow.  
W. R. SMITH, large pink.  
W. C. EGAN, rare pink.  
MABEL MORSE, golden yellow.  
LOUISE BALDWIN, long buds, golden yellow.  
F. O. CHENOWITH, yellow.  
MADAME SEGORD WEBER, light pink.  
JOHN RUSSELL, very rare, beautiful red.  
H. V. MACHIN, deep red.  
MADAME LEON PAINE, salmon.  
NORMAN LAMBERT, coppery yellow.  
The Green Rose is a novelty; should be in every home.  
GOV. DE GEORGES PERNET, Oriental red.  
TALISMAN, yellow, inside of petals red, 75c.  
JULIEN POTIN, golden yellow.  
MARY PICKFORD, orange, shading to yellow, 75c.  
LULU, pink and copper, largest and a beauty.  
ETOILE DE FRANCE, rich red.  
DAME EDITH HELEN, rich pink.  
JEAN FORESTIER, carmine, tinted orange.  
PAUL MYWN, pink, the old cabbage rose.  
ULRICH BRUNNER, red.  
REV. PAGE ROBERTS, rich yellow, apricot yellow.  
EVENING STAR, apricot yellow.  
THE QUEEN ALEXANDRA, beautiful red reflexed.

## Climbing Roses

DR. VAN FLEET, pink.  
W. A. RICHARDSON, rich yellow.  
BLUE CLIMBER, bluish red. 50c.  
AMERICAN BEAUTY, American Beauty pink. 50c.  
AMERICAN PILLAR, red, white caster. 35c.  
GLOIRE DEJON, pinkish yellow. 50c.  
CRIMSON RAMBLER, crimson. 35c.  
DOROTHEA PERKINS, pink. 35c.  
MADAME CAROLINE TESTOUT, large pink. 50c.  
MARSHAL NEIL, yellow. 50c.  
SUNBURST, yellow. 50c.  
LADY HILLINGTON, apricot yellow. 50c.  
PAUL'S SCARLET, scarlet. 50c.  
LOS ANGELES, salmon pink. 50c.  
LA FRANCE, pink. 50c.  
MARIA VON HOUTTIE, pink. 50c.  
HIAWATHA, red. 35c.  
SILVER MOON, white. 50c.  
TAUSENSCHOEN, pink. 35c.  
CLIMBING GRUSS AN TEPLITZ, the finest flower-  
ing red. 50c.  
EMPRESS OF CHINA, deep pink, earliest bloomer.  
MADAME ED. HERRIOT, 50c.

## Tree Roses, \$1.25-\$2.00 each

MADAME BUTTERFLY, pink.  
HOOSIER BEAUTY, red.  
SOUV. DE CL. PERNET, yellow.  
FRAU KARL DRUSCHKE, white.  
CONSTANCE, yellow.  
GENERAL McARTHUR, yellow.  
LOS ANGELES, salmon.  
OPHELIA, pinkish cream.

## Climbing Vines

- BOSTON IVY. 35c.  
 CHINESE MATRIMONIAL VINE, odd purple flowers. 35c.  
 CLEMATIS PANICULATA, small white flowers. 35c.  
 HONEYSUCKLE, yellow and red. 35c.  
 IVY ENGLISH. 35c.  
 IVY IRISH, fine leaved. 35c.  
 TACOMA RADICANS, trumpet vine. 50c.  
 VIRGINIA CREEPER, turning red in fall. 35c.  
 WISTERIA, blue, 75c; white, 75c.  
 YELLOW JASMINE, winter flowering, evergreen yellow, 35c.  
 CLEMATIS JACKMANI, purple. 75c.  
 CLEMATIS MADAME ANDREE, red. 75c.  
 CLEMATIS MADAME BOUILLARD, pink. 75c.  
 CLEMATIS DUCHESS OF EDINBURGH, double white, \$1.  
 CLEMATIS ROMANO, light blue, \$1.



Perennials in a corner of Our Flower Field.

## HARDY ROCK PLANTS AND HARDY PERENNIALS

10c postage per dozen.

Those marked (\*) are Rock Plants. Price, 10c each. \$1.00 per dozen, unless otherwise stated.

- \*AUBRITIA, a large new hybrid, mixed.
- \*AUBRITIA BOUGOWILLIA, rose mauve.
- \*AUBRITIA LICHTENII, lavender.
- \*ANEMONE JAPONICA, Queen Charlotte, pink. 25c.
- \*ANEMONE ST. BRIDGET, mixed.
- \*ANEMONE DE CAEN, double single, all colors.
- \*ASTILBIA AMERICA, deep pink. 25c.
- \*ASTILBIA QUEEN ALEXANDRIA, light pink. 25c.
- \*ASTILBIA REUBENS, deep rose. 25c.
- \*ASTILBIA PRINCESS MARY, soft pink. 25c.
- \*ASTILBIA ALBA, white. 25c.
- ANCHUSA ITALICA DROPMORE, like a large Italian For-Get-Me-Not, blue.
- \*ANCHUSA DWARF.
- \*ARMERIA FORMOSA, one and one-half feet tall.
- \*ARMERIA, rose flowers; low, six-inch; also pink.
- \*ACHILLIA THE PEARL, white.
- \*ACHILLIA ROSEUM MILLEFOLEUM, rose lilac; One and one-half feet.
- ACHILLIA TOMENTOSA, white.
- \*ARABIS ALPINA, white, snow in summer.
- ARABIS, pink.
- \*ARABIS ALPINA FLORA PLENA, double white.
- \*ANTHEMIS KELWAY, hybrid yellow.
- \*ALYSUM SAXATILE, yellow; basket of Gold.
- \*ALYSUM, white, new.
- \*ALYSUM, lilac, new.

- \*AGROSTEMMA CARONAREA, Rose of Heaven, silvery foliage.
- \*ASPERULA ODORATA, Waldmeister Sweet; white, dry, the leaves before blooming are highly scented.
- \*ASTER AMALLUS ROSEUS, new.
- \*ARENARIA BALERICA, white flowers, mossy foliage.
- \*ARENARIA AESPITOSA, white, rock moss.
- \*ASTER ALPINUS, blue.
- \*AQUELEGIA COLUMBINE, double.
- \*AQUELEGIA COLUMBINE, fine long spurred hybrids.
- \*BOLTONEA LATISOUAMA ALBA, five feet, daisy-like flowers, white.
- \*CAMPANULA, mixed. 75c per dozen.
- \*CAMPANULA, pink.
- \*CAMPANULA, cup and saucer, all colors.
- \*CAMPANULA CARPatica, creeping.
- \*CERESTEUM TOMENTOSUM, white creeping, silvery foliage, white, star-shaped flowers.
- \*COREOPSIS, yellow.
- \*CANDYTUFT IBIRIS, lilac.
- \*CANDYTUFT, double white.
- \*CHEIRANTHUS ALLONI, orange; Siberian fragrant wallflower, low.
- \*CHELONE TURTLE HEAD, orange red.
- \*DORONECUM, yellow early daisy.
- \*DIGITALIS FOX GLOVES.
- \*DIANTHUS DELTOIDES, six-inch, red, rose.
- \*DIANTHUS, Pheasant Eye, pinks, all colors of pink white.
- \*DIANTHUS LATIFOLIUS, dark-red flowers.
- \*DIANTHUS ALPISTRUS, rose.
- \*DIANTHUS BARBATUS, Sweet Williams, all colors. 50c per dozen.
- \*DIANTHUS, Sweet Williams, Newport pink. 10c each, 12 for \$1.00.
- \*DIANTHUS, double Pheasant Eye, a great beauty. 25c.
- \*DIANTHUS SUNDERMANII, rare white. 40c.
- \*DIANTHUS PLUMAREUS, Scotch pinks, white and pink.
- DELPHINIUM, fall English hybrids; all colors.
- \*DELPHINIUM BELLADONNA, low.
- DELPHINIUM CHINENSIS.
- \*DICENTRA SPECIETABILIS, bleeding heart. 25c.
- \*DICENTRA, low-growing Dutchman's bridges. 25c.
- DAISY SHASTA, largest white hybrid.
- DAISY BELLIS PERENNE, pink white, dark red. 50c per dozen.
- EVENING PRIMROSE, tall yellow, three feet.
- \*ERENUS ALPINUS, blue and white, six-inch.
- \*ERYSENUM, yellow.
- \*ERIGERON ELEATOR, lavender, fine rock plant. 25c each.
- \*ERIGERON MUCONATUS, small white ever-blooming daisies.
- \*ERIGERON NULTIRADIATUS ROSEUS, new. 25c.
- ERYNGIUM OLEVERANUM, blue, has thistle-like flowers.
- \*ERICA (creeping), heather, pink. 35c.
- \*ENEONEMUS RADICANS, shrubby, variegated, rare. 25c.
- \*FERNs, hardy, for shady places. 25c.
- \*FORGET-ME-NOT, see Myosotis.
- \*FUCHSIA, new hardy. 15c and 25c.
- GAILLARDIA, our Blue Ribbon Hybrids. 15c; large clumps, 25c.
- \*GEUM, Mrs. Bradshaw, orange red.
- \*GEUM SANGUAM, Flora Plena, bright red.
- \*GYPSOPHILIA REPENS, creeping Baby Breath.
- GYPSOPHILIA, Flora Pena, Baby Breath. 25c. The kind to dry.
- GYPSOPHILIA, misty white flowers.
- HELENIUM, Riverton Gem, tall brown, daisy flowers.
- HELENIUM AUTUMNAL SUPERBUM, tall yellow.
- HELENIANTHUS, Sunflower, double yellow.
- HELENIANTHUS, Jap Sunflower, single.
- \*HEUCHERA, coral bells; all colors.

\*HELENIANTHUM MUTABILE, Rock Rose; all colors.  
 HOLLYHOCKS, single mixed, 50c; double, 10c each or 12 for \$1.00.  
 \*ICELAND POPPIES, all colors. Six-inch. Fine Rock Poppy.  
 \*LYTHYUS, Perennial Pea, all colors; fine for corner stumps.  
 \*LYATRIS, Gay Feather Rose. 15c.  
 \*LINUM PERENNE, blue flat.  
 LUPINUS, all colors, blue.  
 LUPINUS, rose. 15c.  
 \*LYCHNIS CAEDONICA, red.  
 \*LYCHNIS VISCAREA SPLENDENS, rose. 15c.  
 LAVENDER, sweet smelling. 25c.  
 \*MONTBRITIAS, all colors, mixed. 75c per dozen.  
 MOUNTAIN HELIOTROPE, sweet lavender flower.  
 MONARDA DIDYMA BERGOMAT, red, curious flowers, three feet. 20c.  
 \*MYRTLE, large blue, small blue, also white, evergreen creeper.  
 MICHAELMAS DAISY, blue, pink, white, lavender, 10c. Red, 15c.  
 \*MYOSATIS, Ruth Fisher. ever-blooming, adapted to dry places. 15c.  
 \*MYOSATIS PALUSTRIS SEMPERFLORENCE, moist, shady places.  
 \*NEPETA MUSSINI, flowering mats of lavender flowers.  
 \*OXALIS SHAMROCK, white red flowers. 25c per doz.  
 \*OX-EYE DAISY, large white, red.  
 \*OREGON SUNSHINE, creeping ever-blooming, yellow.  
 POPPY, large Oriental, red, salmon.  
 \*PENSTIMON MEUSIESII, evergreen, purple flowers.  
 \*PENSTIMON SENSATION, large rose, red, pink, very fine.  
 PEACH BELLS, white, blue perennial Campanula.  
 \*PYRETHRUM HYBRIDUM, painted daisy, mixed.  
 POLEMONEUM, Jacob's Ladder, blue.  
 \*PRIMULA JAPONICA, red.  
 \*PRIMULA, large hybrids, yellow, cream.  
 \*PRIMULA, hybrid, red.  
 \*PHLOX SUBALATA, lavender pink, creeping rock plant.  
 PHLOX, hardy lavender, pink, white rose, red, purple.  
 \*PHILARIS ARUNDINACEA, Ribbon Grass.  
 \*ROCK IRIS, six-inch, yellow or purple.  
 RUDBECKIA, Golden Glow, tall yellow.  
 RUDBECKIA PURPUREA, cone flower, purple.  
 \*SAXIFRAGA TUNICA, pink.  
 \*SEDIUM ACRE, yellow.  
 \*SEDIUM SPUREUM, red.  
 \*SEDIUM SIBOLDI, red, tall. 25c.  
 \*SEDIUM GLAUCUM, white.  
 \*SEDIUM KAMSHATICUM, yellow.  
 \*SEDIUM ROSEUM.  
 \*SEDIUM ARBOREUM, blush flowers.  
 \*SEDIUM REFLEUM, yellow.  
 \*SEMPERVIVUM, Hen and Chickens.  
 \*SEMPERVIVUM ARACHNOIDIUM, red flowers. 15c.  
 \*SAUTOLINA, silvery foliage.  
 \*SAXIFRAGA VINBROSA, dainty pink flowers.  
 \*SAXIFRAGA CROSSIFOLIA, pink.  
 \*SAXIFRAGA ALBITA, fleshy leaves and white flowers.  
 \*SALVIA FARINECIA, blue. 15c.  
 \*SALVIA GLOBOSA, heavy white leaves, white flowers. 25c.  
 \*STATICE LATIFOLIA, lavender Baby Breath. 15c  
 \*SILINE SHAFTA, rose creeping.  
 \*SAPONAREA OCYNOIDES, rose, trailing.  
 \*TRILLIUM, wood lily, for shady place.  
 \*TROLEUS EUROPEAN, orange flowers. 25c.  
 \*THYMUS CITRIODONUS, golden leafed. 15c.  
 \*THYMUS ALBUS, white.

\*THYMUS LANGINOSUS, bright pink, gray holly foliage. 20c.  
 \*THALICTRUM AQUELIBOLIUM, lavender. For shady places. 25c.  
 \*VIOLA CORNUTA, G. Werning, purple, creeping, flowering close mats.  
 \*VIOLA, apricot. 15c.  
 \*VIOLET, Princess of Wales, large. 75c per dozen.  
 VIOLET, Swanley, white. 75c per dozen.  
 VIOLET, pale blue, large flowering, almost ever-bloomer. 75c per dozen.  
 VIOLET, yellow (native). 50c per dozen.  
 \*VIOLETS, California. 75c per dozen.  
 \*VIOLETS, double Marie Louise. 75c per dozen.  
 VALERIANA, Garden Heliotrope, red, white.  
 WALL FLOWERS, all colors.  
 MASTODON PANSIES, the very best we have ever had. 50c per dozen.  
 VARIEGATED LEAF, new sedum. 25c.  
 NEW YELLOW ORIENTAL POPPY. 75c.  
 SCABIOSA CANCASICA, blue. 25c.

## New Rock Plants and Perennials

\*POTENTILLA ENCOREUM, matty, little yellow flowers. 15c.  
 \*AYUGA REPTANS, creeping, intense blue flowers. 25c.  
 \*ASTER, mauve cushion, 6 inches high, blue mauve flowers. 25c.  
 \*SAXIFRAGA MAGESIA, broad leaf (early), pink flowers. 25c.  
 GAURA LINDHEIMERII, new flower, blooms from June till frost. 3 feet high. 25c.  
 DOUBLE PEACH, bell white and blue. 25c each.  
 DIANTHUS ALPINUS, deep pink, 3-inch. 25c.  
 \*ACAENA GLAUCA, New Zealand, burr carpeting. 25c.  
 \*SEDIUM SPATHULIFOLIUM, coxcomb like heads of yellow flowers. 25c.  
 \*VIOLA BOSNICA, pink viola. 25c.  
 \*HYPERICUM CORIS, rare, spreading Glaucus foliage, golden yellow flowers. 25c.  
 \*ERODIUM MANESCAVA, bright rose, crimson, purple, flowers, 6-inch. 25c each.  
 \*ARABIS, variegated leaf, white flowers, rare. 25c.  
 \*ZAUCHNERIA, Rock Fuchsia. 25c.  
 GERBERIA JAMISONI, Transvaal daisy. 25c.  
 \*VERONICA REPENS, creeping blue. 15c.  
 \*VERONICA RUPISTUS, creeping, 6-inch, lighter blue. 15c.  
 \*VERONICA SPICKATA, 12-inch. 10c.  
 THALICTRUM DIPTOPHORICUM, lavender flowers. 25c.  
 WHITE ORIENTAL POPPY. 25c.  
 DARK-RED NEW ORIENTAL POPPY. 25c.  
 SCABIOSA CANCASICA, blue bonnet, hardy, 25c.  
 CALANDRIANA UMBALATA, reddish magenta blooms in August and September, 6-inch, 25c.  
 JASIONE PERENNE SCABIOSA, like flowers, blue, 6-inch, 15c.  
 VERONICA PICKTANATA, gray leaf, blue flowers, creeping, 15c.  
 VIOLA BRONZE QUEEN, 10c.  
 DRABA, yellow flowers, makes close mats, 15c.  
 SUMMER CRYSANTHEMUM, blooms all summer, pink, 25c.  
 SILENE, Oriental splendor, rose colored flowers, 18-inch, 25c. Charming flower August till frost.

Bulbs From Native Flowers, Very Beautiful  
 \$1.00 per Dozen

1. ALLIUM, pink.
2. FRISTILLARIA, yellow bells.
3. EUYTHRONIUM, lavender.
4. BRODIAEA, blue.



Tub Culture

## ✓ WATER LILIES

Have a lily pool, either a cement pool or tubs; expose to full sunlight. Plant lilies in rich dirt and bone-meal, as this will produce fine blossoms. Water Lilies should be planted in 2 to 3 feet of water.

### Hardy Water Lilies

- JAMES BRYDON**, a superb lily, rosy red, free bloomer. \$2.00.  
**CROMOTELLA**, large free blooming yellow with spotted leaves. \$1.25.  
**NYPHEA MARLIAC ROSE**, fine pink. \$1.25.  
**NYPHEA MARLIAC ALBA**, white, large bulbs. Bulbs, \$1.00; small, 75c.  
**NYPHEA MARLIAC FLESH**, faint pink. \$1.00.  
**STRIPED ROSE AND WHITE**, an odd flower of good size. \$1.25.

These Lilies are acclimated and therefore will give the greatest satisfaction. The hardy ones can be left in the pool in the winter.

- PAUL HERRIOT**, a wonderful lily, coppery pink, very hardy, \$150.  
**GOLDFISH**, 25c up. Extra large breeders, 75c to \$1.00. By express only.



One of our Pools and a Water Nymph

## Aquatic Plants

- PARROT FEATHER**, green feathery trailing plant, valuable for the fish to spawn on. 3 for 50c.  
**VELVET LEAVE**, erect plant, flowers straw color; leaves velvety. 50c.  
**WATER POPPY**, the leaves float on the water, flowers yellow; an ever-bloomer. 25c each.  
**WATER CALLA**, like a Calla lily but smaller blossoms. 25c.  
**ARROW HEAD**, double flowering. 75c.  
**WATER IRIS**, yellow. 15c.

- WATER HYACINTH**. 25c each, five for \$1.00.  
**UMBRELLA PALM**. 25c.

### Plants to Grow Around Pool

- PAMPAS GRASS**. 40c.  
**BAMBOO**. 50c clump.  
**CAT TAILS**. 25c, fine for swampy or shallow places.  
**AGAVA**, striped or plain, century plant. 50c to \$5.00.  
**NEW, EVER-BLOOMING IRIS**, purple flowers; water only. 50c.  
**FLOATING HEARTS**, yellow flowers. 25c each.



## ✓ DAHLIAS

- PRIDE OF GRESHAM**, originated by Elsa Suhr, scored high at the Northwest Trial Gardens; yellow overlaid apricot, decorative, and a good cut-flower. 50c.  
**AFRA**, show pink. \$2.00. New.  
**AGNES DUNLAP**, peony, red, purple, 25c.  
**ANNE MOORE**, December, purple, large, 15c.  
**ANTEME**, show orange tipped red. \$1.50. New. Imported by us from Germany in 1928.  
**A. D. LIVONI**, show pink. 10c.  
**AMERICAN BEAUTY**, show, w/fne color. 10c.  
**ADMIRAL DEWEY**, decorative black maroon. 10c.  
**ALLIE MOURIE**, Pompon lavender pink. 15c.  
**BIANCA**, lavender pink, cactus. 25c.  
**BONNIE**, blue decorative, almost blue. 15c.  
**BILLIONAIRE**, monster Peony, golden orange. 50c.  
**BRIDE'S BOUQUET**, white, cactus, 25c.  
**BRILLIANT**, red show. 10c.  
**BLACK BEAUTY**, decorative, velvety maroon. 10c.  
**BELLE OF SPRINGFIELD**, brick red Pompon. 10c.  
**BALLET GIRL**, cactus, giant orange edged white. 25c.  
**BIZARRE**, cactus, maroon, tipped white, 25c.  
**CHARMED LAND**, cactus cream, salmon. 50c.  
**CITY OF PORTLAND**, yellow monster Peony. 25c.  
**CIGARETTE**, cactus, giant, cream and red, 25c.  
**CLAUDE HARLAN**, giant decorative lavender. 50c.  
**CHALLENGE**, decorative crimson, golden large. 25c.  
**CARMENCITA**, decorative giant yellow striped red. 25c.  
**CORAL QUEEN**, Peony giant, yellow red. 25c.  
**COUNTESS JULIANA**, cactus, white, 25c.  
**CLARA HARSH**, Pompon yellow, overlaid with red. 25c.  
**CUBIAN QUEEN**, peony, red, yellow, 15c.  
**DADDY BUTLER**, cactus, American Beauty. 50c.  
**DREERS**, white, show, giant white. 10c.  
**DARKEST OF ALL**, Pompon, maroon. 10c.  
**DREAM**, decorative salmon. 20c.  
**EDNA SPENCER**, cactus giant, cream, white, 35c.  
**EMILY**, show, lavender pink. 10c.  
**EMPRESS**, cactus, light purple, 25c.  
**FAIRY QUEEN**, Pompon, yellow-edged pink. 20c.  
**GIRLIE**, Pompon, mauve rose. 20c.

GENERAL JOFFRE, decorative pink, white center. 10c.  
 GRAPHIC, cactus, maroon, tipped white. 10c.  
 GOLDEN WEST, giant cactus, yellow overlaid brown  
 25c.  
 GEO. WALTERS, giant cactus, pink gold center. 50c.  
 G. M. GOODRICH, giant cactus, purplish, red, 25c.  
 GLADYS SHERWOOD, giant cactus, white, 50c.  
 HAWAIIAN MOONLIGHT, cactus, yellow, often tipped  
 white, 35c.  
 HUGH DUTTON, giant cactus, deep crimson. 25c.  
 HOFFNUNG, cactus, gold amber. 25c.  
 IMMENSE, decorative, white, splashed purplish red.  
 25c.  
 JEAN CHAZOT, cactus, giant bronze suffused red. 25c.  
 JEANNE CHARMET, decorative, lilac pink, shaded  
 white. 25c.  
 J. H. PETERS, cactus, coral red. 15c.  
 JAS. C. GILL, Peony, golden splashed red. 25c.  
 JUPITER, cactus, red, striped yellow, 25c.  
 KING ALBERT, giant decorative, rich royal purple.  
 25c.  
 KLONDYKE, cactus, gold. 25c.  
 LAVINE, cactus, white. 25c.  
 LORNA DOONE, pink cactus, tinted carmine. 25c.  
 LEONE, Peony, yellow. 10c.  
 LUCY FAUCET, pink, cactus, 25c.  
 MARATHON, cactus, purple. 15c.  
 MARGARET BOUSHON, cactus, rose white tips. 40c.  
 MISS HELEN HOLLIS, show, giant scarlet. 25c.  
 MRS. IDA VON WARNAR cactus, white flushed  
 pink. 50c.  
 MAID OF RENT, decorative, giant, white. 25c.  
 MELODY, cactus, yellow. 25c.  
 MADAME VON BEISTEIN, large Peony, lavender.  
 25c.  
 MRS. WINTERS, decorative, white. 10c.  
 MRS. CARL SALBACH, monster decorative, mauve  
 pink. 40c.  
 MRS. J. H. JONES, cactus, red white variegated. 25c.  
 MARCELLA GILL, decorative, pink. 25c.  
 MOLALLA, show, yellow, tipped white. 15c.  
 MISS M. McCULLOUGH, decorative, yellow, overlaid  
 red. 10c.  
 MODEL, cactus, waxy yellow, plume blush. 25c.  
 MRS. FLEMING, large white cactus. 25c.  
 MISS HELEN DURNBROUGH, cactus, monster delicate  
 pink. 25c.  
 MILLIONAIRE, giant decorative, lavender. 40c.  
 MRS. NELLIE DEAN, pink, 25c.  
 NATURE'S MASTERPIECE, December rose, bronze, a  
 monster, \$1.00.  
 NIEBELUNGENHORTE, giant cactus, old rose, suf-  
 fused with apricot. 25c.  
 OBAN, decorative, odd color, lilac rose. 10c.  
 OREGON, cactus, deep rose, carmine cerise. 50c.  
 OREGON BEAUTY, Peony, wonderful red. 10c.  
 PAUL BUNYAN, December, giant salmon pink, 25c.  
 PRIDE OF CALIFORNIA, giant decorative, rich ma-  
 roon, strong stems. 25c.  
 PURPLE DUKE, decorative. 10c.  
 PIERROT, large yellow cactus, red-tipped white. 25c.  
 QUEEN BESS, Colorette, crimson yellow color. 15c.  
 RHEINISCHER FROHSINN, cactus, carmine cerise.  
 25c.  
 ROSA NELL, December, reddish purple, large, 25c.  
 SWALLOW, colorette, white. 15c.  
 petals, carmine rose. 50c.  
 SNOWBALL, show, white. 10c.  
 SWEET BRIAR, deep pink, cactus, 50c.  
 TOM LUNDY, cactus, giant deep crimson. 25c.  
 THE ORIOLE, giant peony, red, yellow, 40c.  
 UNION JACK, cactus, bright red, tipped white, 25c.  
 WASSO BEAUTY, peony, yellow, red, 25c.  
 WINIFRED, Pompon, white, edged lavender. 10c.  
 YELLOW PRINCE, decorative, yellow. 10c.

## GLADIOLI

RAINBOW MIXED. 75 first size, \$1.00; 100 second  
 size for \$1.00  
 STANDARD VARIETIES. 50c a dozen, unless other-  
 wise stated.



Our Field of Gladioli

ALICE TIPLADY, a Primelinus orange salmon.  
 BARON JOSEPH HULOT, blue. 75c a dozen.  
 BUTTERFLY, salmon maroon, blotch, large flowers.  
 CRIMSON GLOW, large ruffled.  
 EMPRESS OF INDIA, dark red, almost black.  
 EVELYN KIRTLAND, pink ruffled.  
 GRETCHEN ZANG, pink.  
 GOLDEN MEASURE, large golden. \$1.00 per dozen.  
 GLORY OF HOLLAND, white.  
 HALLEY, large pink, early.  
 HERADA MAUVE. \$1.00 per dozen.  
 JOE COLEMAN, ruffled red.  
 J. C. PETERS, largest flaming red. \$2.00 per dozen.  
 LILY WHITE, white.  
 LE MARSHAL FOCH, large pink.  
 MARY PICKFORD, cream.  
 MRS. FREYER, glowing red.  
 MRS. FRANK PENDLETON, pink maroon blotched.  
 MRS. FRANCIS KING, scarlet.  
 MRS. WATTS, wine color.  
 MRS. LEON DOUGLASS, rose striped scarlet. \$1.50  
 per dozen.  
 PINK WONDER, a large ruffled pink. \$1.00 a dozen.  
 PURPLE GLORY, best purple. 75c a dozen.  
 PRINCE OF WALES, salmon pink.  
 PEACHES, yellow, red, pink.  
 PRIMELINUS, mixed.  
 ROSE ASH, Ashes of Roses.  
 SCHWABEN, yellow.

## VEGETABLE PLANTS

RED CABBAGE. 15c per dozen.  
 CABBAGE, early Wakefield and Copenhagen market.  
 10c a dozen, 75c per 100.  
 RHUBARB ROOTS, Victoria Mammoth. 3 for 25c, 15  
 for \$1.00, \$4.50 for 100, \$40.00 for 1000.  
 HORSERADISH. Sets, 25c a dozen, 85c per 100.  
 TOMATOES, Earliana, Bonny Best. 20c a dozen, 90c  
 per 100. Golden Queen, 25c a dozen. Pear Tomato,  
 25c a dozen. Ground Cherry, 25c a dozen.  
 PEPPERS, Sweet Chinese Bell. 20c a dozen.  
 CELERY, golden self-blanching. 15c a dozen, 60c  
 per 100.  
 LETTUCE, New York market, solid heads. 10c a doz.,  
 75c per 100.  
 KALE, Thousand Wonder. 10c a dozen, 75c per 100,  
 \$4.50 per 1000.  
 CURLY KALE. 75c per 100, \$4.50 per 1000.  
 CAULIFLOWER, 15c a dozen.  
 CHIVES, fine for salads and soups. 10c roots.  
 MINT ROOTS. 10c each.  
 Write for prices on large lots.  
 CATNIP. 15c.



## ANNUALS

30c a dozen unless otherwise stated. Mixed or solid colors.

Asters, Snap Dragons, Candytuft, Godetia, Clarkia, Larkspur, Sweet Alyssum, Zinnias (giant or small flowering), Petunias, Ageratum (blue floss flower), Cosmos, Marigolds (5 kinds), Salvias (tall or low), Torenia, blue, Verbinias. Ask for prices on large lots.

Pansies—Steel's Mastodons and Greater American strains. These are the best obtainable and the price is 50c per dozen.

Kochias (Summer Cypress), 10c each, \$1.00 per doz. (The kind that turns red in the fall.)

Pot Plants, Cyclamens, Primroses, Roses in pots, Chrysanthemums.

Ferns of all kinds. Carnations, four best varieties. Prices on request.

Calla Lilies, white, large plants, 50c each.

Cut Flowers in season.

## BEDDING PLANTS

We are headquarters for fine Geraniums.

Everything for that porch box or hanging basket. Geraniums, \$1.00 and up to \$2.50 per dozen.

Hale Canes, Florence Lorenze (new pink), Rickard, S. A. Nut, Hill, Pointevine, Red Cross, Cavalenski (double white, single bright red). Also Ivy Geraniums, Rose Geraniums, Martha Washingtons, Strawberry Geraniums, Pansy Geraniums, 15c and 25c.

## LILIES

ALSTROMERIA, Persian Lily, orange yellow, strong clumps, 25c each, \$2.50 per dozen.

CANDIDUM, Madonna Lily, white St. Joseph lily. 25c each, \$1.50 per dozen; smaller, 15c, \$1.50 per dozen.

ELEGANCE LILY, 3 to 6 blossoms to a spike, orange, scarlet. 25c, \$2.50 per dozen.

FAIRY LILY, or Hardy Amarellis, lavender blossom. 20c, \$2.00 per dozen.

DOUBLE TIGER LILY, orange spotted black, handsome. 15c, \$1.50 per dozen.

FLAVA LEMON LILY. 15c each, \$1.50 per dozen.

MT. HOOD LILY, white. 25c, \$2.50 per dozen.

REGAL LILY, white shade rose. 20c, \$2.00 per dozen.

ORANGE DAY LILY. 15c, \$1.50 per dozen.

PADALINUM, orange yellow. 25c, \$2.50 per dozen.

CAMASSIA ESCALANTA, blue lily, 2 1/2 feet high, a native, very pretty and scarce. 25c each, \$2.50 per dozen.

AMAPHOPHILLIS RIVIERE, black Lily of the Nile, very ornamental. 25c each, \$2.50 per dozen.

LILLIUM HENRI, yellow, tall mammoth, lily, very rare, large bulbs. 50c each, \$5.00 per dozen.

LILY OF THE VALLEY. 75c per dozen.

SCILLA SIBERICA, blue. 50c per dozen.

STAR OF BETHLEHEM, white star flowers. 50c per dozen.

FUNKIA, lavender lily. 15c.

FUNKIA, variegated leaf, lavender flowers. 25c.

## Cannas

We ship plants only, as they are far more satisfactorily started early in our greenhouse. They will give the best of results and the price is not any higher than bulbs which often rot in the ground if planted too early. 25c each, \$2.50 per dozen.

Wonderful tropical effect with our giant Banana Leaf Canna. Grows 8 to 10 feet high. The flower is small but the leaves are wonderful. This Canna is wanted mostly for center of beds, around pools or as single specimens. Green leaves with dark ring.

BANANA LEAF CANNAS, large plants.

KING HUMBERT, bronze foliage, large orange-scarlet flowers, five feet.

THE PRESIDENT, or Fiery Cross, a sensation, fiery red, large blossoms, green foliage, four feet.

CITY OF PORTLAND, a grand new Canna, color is bright rosy pink, leaves green, four feet.

WYOMING, rich orange yellow blossoms, purple bronze foliage, four to five feet.

EUREKA, the best White Canna, free flowering, large blossoms, green foliage, 4 1/2 feet.

RED PLUME, three feet, fiery red flowers, like a plume, green foliage.

Cannas are all one price. 25c each, \$2.50 per dozen.

## IRISES

We grow Irises extensively. The ones listed for 10c each we can supply at \$5.00 per 100.



One of my Iris Gardens

Prices are for each. S means standards, F means

Falls.

AMBASSADOR, S dull lavender, R red lavender. 75c.  
ANNA FARR, S white bordered, pale blue; F pure white, blue at base. 75c.

ALCAZAR, large, stately; S violet, F purple. 50c.

ARCHEVEQUE, S deep violet, F deep yellow violet. 50c.

BRITANNICA, blue striped black. 10c.

COLONEL CANDILOT, S bronze, lavender; F rich pansy violet. 75c each.

CELESTE, clear blue. 10c.

DAWN, sulphur yellow. 75c.

DU BOIS DE MILAN, S lavender, F purple. 10c.

FLAVESCENT, canary yellow. 10c.

FUERSTIN LONGAY, S bright violet; F deep violet. 50c.

HER MAJESTY, rose pink. 25c.

HONORABLES, S yellow; F cinnamon. 10c.

ISOLINE, S lilac pink; F deeper. 50c.

MAMIE, fragrant white ruffled blue. 10c.

MITHRAS, S straw color; F wine red, bordered yellow. 50c.

MADAME BOULLET, S buff, deep red edge; F yellow tinted with dotted brown. \$1.00.

MADAME DE SAVIGN, S violet; F white, bright violet markings. 75c.

MOZART, smoky lavender. 10c.

MOTHER OF PEARLS, deep lavender, stately. 50c.

OPERA, S red purple; F purple violet. 50c.

PROSPERO, S lavender blue; F deeper reddish purple. \$1.00.

PURPLE PRINCE, a fine, deep purple. 10c.

ROCK IRIS, six-inch, yellow, purple. 10c.

SIBERIAN IRIS for edging of pools, purple, white. 10c.

SILVER KING, white. 10c.

QUEEN OF MAY, pink. 10c.

QUAKER LADY, smoky lavender. 50c.

JAPANESE IRIS, 20 different kinds, 25c each, that would sell for 50c each elsewhere.

JAPANESE IRIS, mixed, 10c; 12 for \$1.00.

DUTCH IRIS, lavender only. 10c a bulb.

HOLLAND IRIS, Peter Pan, like a large butterfly, cream, yellow blotch. 25c. New.

VARIEGATED LEAF IRIS, blue flowers. 25c. A novelty.

## DUTCH BULBS

GOLDEN SPUR, golden yellow. 60c per dozen.  
KING ALFRED, golden yellow, large trumpet. 20c each, \$2.00 per dozen.  
MADAME DE GRAF, White Perianth, yellow cup. 75c per dozen.  
ALBA PLENA ODORATA, double white. 50c per doz.  
PHEASANT EYE, White Perianth, orange cup. 50c per dozen.  
GOLDEN PHOENIX, a rose double, pale orange yellow. 60c per dozen.  
ELVIRA (Poetaz Hybrid), white yellow eye, four blooms to stem. 75c per dozen.  
DAFFODILS, single, double, mixed. 30c per dozen.  
HYACINTH, red, white, blue purple, red, fine bulbs. \$1.75 per dozen.

## TULIPS

PRIDE OF HARLEM, large red. 60c per dozen.  
CHROMOTELLA, fine yellow. 50c per dozen.  
PERFECTA, red and yellow striped dragon or parrot. 75c per dozen.  
ORANGE GLOBE, crimson scarlet to orange. 60c per dozen.  
SPATHULATA MAYOR, rich crimson with blue blotch 60c per dozen.

## PEONIES

We send out only strong clumps in colors—white, red and pink. 50c.  
FESTIVA MAXIMA, double white red spots. 60c each.  
BARONESS SCHROEDER, delicate pink, a beauty. 50c.  
MARIE JAQUIN, pink, semi-double 50c.  
FELIX CROUSSE, bright red, full large floker. 50c each.  
ALBERT CROUSSE, shell pink with crimson markings in center, large. 50c.  
PRINCE OF DARKNESS, very dark red peony. \$1.00 each.  
THE BRIDE, pure white. 75c each.  
MADAME DE VERNEVILLE, early white crown-shaped center. 75c each.  
YUCCAS, 50c each. TRITOMAS, 25c each. PAMPAS GRASS, 40c and 50c each.

## CHRYSANTHEMUMS

Aster, Button, Single, Japanese types. 10c, 12 for \$1.00, unless otherwise stated.

AUTUMN QUEEN, large yellow, striped red. 25c.  
ALICE, red, aster type.  
AMATERUSA, yellow hairy.  
ANNA L. MORAN, pompon, scarlet. 25c.  
BRONZE BUCKINGHAM, bronze aster.  
BABY BRIGHT EYES, pompon pink, new. 15c.  
BELLE MAUVE, mauve. 35c.  
BONAFFEN, large yellow. 25c.  
BRONZE QUEEN, large bronze. 25c.  
CACTUS, fiery terracotta, 35c.  
CHAS. JOLLY, single light red.  
CLIMAX, yellow Pompon.  
CHRYSOLORA, the best large yellow. 25c.  
CHAMPAGNE, dark maroon.  
CHESTNUT, bronze Anemone type.  
CRIMSON SOURCE DE ORE, crimson.  
CURLY LOCKS, large, Jap., 35c.  
EARLY FROST, Aster type, large white. 25c.  
FRANK BEU, striped red.  
GOLDEN CLIMAX, yellow Pompon.  
GOLDEN STAR, Aster type.  
GENEVIEVE, single dull red. 15c.  
GLADYS DUCKHAM, single, white, 35c.  
GRAF VON FLEMING, narrow petals, pale center, lavender. 35c.

GRAF VON OREOLE, lavender yellow. 20c.  
HOMESTEAD, pink.  
HOWARD, large red striped yellow. 25c.  
HILDA CHANNING, bronze button.  
JANE, bronze yellow center single.  
JULIA LA GRAVE, dark red Pompon.  
J. W. MARTIN, pink. 35c.  
JUNO, lilac white center. 35c.  
ISOLA, pink Anemone type.  
IDA, semi-single, yellow.  
KATHLEEN THOMPSON, crimson cap. 35c.  
LETTE DOT, pink button.  
LILAC CAP, large new lilac pink. 25c.  
MRS. BUCKINGHAM, single pink.  
MAID OF RENT, small white Aster type.  
McCOYD, new lavender Anemone.  
MAUD DEAN, purple, a beauty. 25c.  
MADAME HUNT, milk white. 35c.  
MRS. HENRY EVANS, resembles a large cactus dahlia, crimson in color, each \$1.00.  
NOVEMBER SNOW, white Pompon.  
OCTOBER FROST, pure white. 15c.  
PURPLE WING, large size, 50c.  
QUEEN OF THE CREAMS, incurved. 25c.  
QUEEN, lavender striped, white, semi-single.  
RED INDIAN, early dull red.  
RED BIRD, ruby red. 25c.  
SOURCE DE ORE, gold tints. 25c.  
RENA, rose violet Pompon. 35c.  
SUNSHINE, Jap yellow.  
TINTS OF GOLD. 25c.  
VIOLA, violet pink. 25c.  
WHITE DOTY. 25c.  
WHITE THREAD, yellow thread.  
YELLOW TURNER, large exhibition, 35c.  
GREEN. 25c. New.

## EVERGREEN CONIFERS

ARBOR VITAE, golden. 75c, \$1.00, \$1.50.  
ARBOR VITAE OCCIDENTALIS, green, small. 50c, 75c, \$1.50.  
CYPRESS LAWSON, blue pyramidal. 75c to \$2.50.  
CREPTOMERIA JAPONICA, small. 25c, 35c; larger, 75c to \$1.00.  
ITALIAN CYPRESS. \$1.00 to \$2.50.  
IRIS JUNIPER, small, 50c; larger, \$1.00, \$1.50, \$2.00.  
JUNIPER, Chinese, 1½-foot, very rare. \$1.00.  
RETENESPORA PLUMOSA, green. 25c, 50c, \$1.00, \$2.00.  
RETENESPORA PLUMOSA AUREA, golden. 25c, 75c to \$2.00.  
RETENESPORA SQUAROSA, greyish plume-like, odd-shaped evergreen. 50c to \$2.50.  
PINUS PENEROSA, long-needled pine. \$1.00 to \$2.00.

## EVERGREENS

Broad and small leaves, also berry bearing.

ABELIA GRANDIFLORA, shiny leaves, fragrant white flowers. 50c, 75c and \$1.00.  
AZALIA MOLLIS, orang epink, fine. 75c, \$2.50.  
AZALIA HONDINGASI, fiery red. 50c, 75c, \$1.00, \$2.50.  
AUCUBA, gold dust laurel. 25c, 75c, \$1.00.  
BARBERRY, Jap. Thunbergi, red berries. 25c, 50c, 75c.  
BARBERRY WILSONI, dwarf, \$1.00 each.  
BARBERRY, red leafed, new and rare. \$1.00.  
BARBERRY, purple leafed. 75c.  
PERNETTYA, scarlet berries. \$1.00.  
BACHARIS PATAGONICA, shiny leaves, yellow flowers. 25c, 50c, 75c.  
BOXWOODS, \$1.00 per dozen to \$2.50 per dozen.  
COTONEASTER SIMONSI, red berries, grows tall to 5 feet. 50c to \$1.00.  
COTONEASTER MYCROPHYLLA, red berries, fine for banks rockeries, low. 25c, 35c, 50c.  
COTONEASTER FRANQUETTE, red berries, white leaves, weeping. 50c, 75c.  
CAMILLIAS, red pink. 50c, 75c, \$1.00 to \$2.50.  
DAPHNE ODORA, tall. \$1.00 to \$2.50; small, 25c.  
DAPHNE CNEORUM, (Rock Daphne), low. \$1.00.

EUNEMOS JAPONICA, shiny leaves. 25c, 50c, 75c.  
 EUNEMOS RADICANS, creeping for Rock gardens, green, white leaves. 35c.  
 ESCOLONIA ROSEA, pink flowers. 25c, 35c.  
 ENGLISH LAUREL. 25c up.  
 FIRETHORN PYRECANTHA, red or orange berries. 50c, 75c, \$1.00 and \$1.50.  
 GOLDEN PRIVET. 50c, 75c, \$1.00.  
 HONEYSUCKLE JAPANESE, evergreen (Lonicera Nitida). 25c, 35c, 50c, 75c.  
 HYPERESCUM ST. JOHNS WORTH, the bush is not spreading kind, yellow rose-like flowers. 35c, 50c.  
 LAURISTINUS VIBERNUM TINUS, pink flowers in winter. 25c, 50c, 75c, \$1.00.  
 OREGON GRAPE, Mahonia Aquifolia, yellow flowers blue berries. 35c, 50c, \$1.00.  
 PRIVET, small, 10c, 15c, 25c.  
 RHODODENDRON, pink. \$1.00, \$1.50.  
 SCOTCH BROOM, yellow. 25c, 50c.  
 SCOTCH BROOM, fragrant cream. 25c, 35c.  
 SCOTCH BROOM, red, yellow, spotted, rare new plant. 75c, \$1.00.  
 VERONICA ERECTA, green, tall. 25c, 50c, 75c.  
 VERONICA CUPRESSOIDES. 25c, 50c.  
 VERONICA GLAUCIFOLIA, greyish foliage. 25c, 50c,



**“better flowers!”**

“My garden has never been so beautiful as this year after I applied Vigoro,” writes Mrs. W. H. Bateman, 1936 West 102nd Street, Chicago.

“At a recent competition my roses, poppies and pinks, were awarded first prizes.”

Clean, dustless, weedless, and *Odorless!* Vigoro is the ideal plant food for lawns, flowers, gardens, shrubbery and trees.

Ask your dealer about this new scientific plant food so easily applied—the most effective and economical you can buy.

**VIGORO**  
*Specially prepared plant food*

*A Swift & Company product*

## SHADE TREES

MOUNTAIN ASH, red berries. 75c, \$1.00.  
 BIRCH, European, white. \$1.25.  
 BIRCH, cut leaf. \$1.50 to \$1.75.  
 CRAB, flowering, double. \$1.00 to \$1.25.  
 DOGWOOD. \$1.00.  
 ELM, American. \$1.00.  
 MAPLE, Norway. \$1.00.  
 HAWTHORNE, grafted, red or pink. \$1.00, \$1.50, \$2.00.  
 TULIP TREE, 6-8. \$1.50.  
 VARIEGATED JAPANESE MAPLE. \$1.00 to \$1.50.  
 WILLOW, weeping. \$1.00 to \$1.50.  
 Japanese Red Maple Dwarf, growing rare, shrubby tree. \$2.50.  
 Japanese Weeping Flowering Cherries, very choice, grafted, 3½ fet. \$3.00.  
 Chinese Bush Cherries, pink, earliest of all flowering trees, small plants. 25c.

## FLOWERING SHRUBS

One-year, 25c; two-year, 35c; three-year, 50c, unless otherwise stated.

ALMOND, double pink. 75c.  
 BUDDLEIA, butterfly bush in two colors—lavender, purple.  
 CORAL BERRY, lovely in winter, pink berries.  
 DEUTZIA, double white, faint pink blush.  
 FORSYTHIA, Golden Bell. 50c, 75c.  
 GOLIGA BICOLAR, lavender flowers, sometimes called Bush Wisteria.  
 HYDRANGEA, bush, pink, blue.  
 HYDRANGEA, tree, cone-shaped flowers. 60c to \$1.50.  
 HYDRANGEA, white bush grows five feet tall.  
 KERRIRA JAPONICA, double yellow. 50c.  
 LILAC, single white purple.  
 LILAC, double white, purple. 75c, \$1.00.  
 MOCK ORANGE, sweet scented, white.  
 QUINCE, Japanese, red. 50c, 75c.  
 SNOWBALL, common large blossoms. 40c, 50c.  
 SNOWBALL, Japanese. 75c.  
 SPIREA VON HOUTTIE, Fountain of Snow, white.  
 SPIREA PRUNIFOLIA, double. 50c.  
 SPIREA, Anthon Waterer, red. 35c to 50c.  
 SPIREA, blue, 25c, 50c.  
 VARIEGATED ELDER.  
 VARIEGATED DOGWOOD. \$1.00.  
 WEIGELIA ROSEA, pink.  
 WEIGELIA ROSEA, variegated leaves, pink flowers.  
 WEIGELIA, Eva Rathke, ever-blooming red. 50c, 75c.  
 ROSE OF SHARON, red, lavender, pink. 50c.

## VIGORO

A specially prepared plant food. We had wonderful results with it; use it sparingly.

5-lb. package, 60c.  
 25-lb. package, \$2.00.  
 50-lb. package, \$3.75.  
 100-lb. package, \$6.00.

## FRUIT TREES

One-year, 50c; two-year, 75c. All leading varieties.

APPLES, APRICOTS, CHERRIES, PEACHES, PEARS, PLUMS and PRUNES.  
 WALNUTS, Franquette, grafted. \$1.00 up.  
 Write for prices on large lots.  
 FIG TREES—Adapted for Oregon and Washington, raised here.  
 GILLETTE, yellow, from France, heavy bearer, ea. \$2.  
 GRANATA, black, from Persia, the largest fig known, each \$2.00.  
 LATTARULA, white, Asiatic, honey fig, fine for commercial use, each \$2.00.

## BERRY PLANTS

RASPBERRIES, Red Cuthberts. 50c a dozen, 90c per 100, \$6.00 per 1000.  
 Golden Queen, yellow Raspberries. 10c, \$1 a dozen.  
 Everbearing Red La France. 10c, \$1.00 a dozen; \$5.00 per 100.  
 Everbearing Red St. Regis. 50c a dozen; \$3 per 100.  
 BLACKBERRIES, Himalaya. 5c each, 50c a dozen.  
 BLACKBERRIES, Lawton. 50c a dozen.  
 BLACKBERRIES, Iceberg, new white. 10c each, \$1.00 a dozen.  
 BLACKBERRIES, Cory Thornless. 15c each, \$1.50 a dozen.  
 BLACK CAPS, Plum Farmer. 10c each, \$1.00 a dozen; (also Gregg), \$7.00 per 100.  
 GRAPES. 15c each, \$1.50 a dozen, \$5.00 per 100.  
 Niagara, yellow; Concord and Worden.

### ABOUT ORDERING

First of all, write your name and address plainly. Send money or check. Stamps are a loss to us. "Prompt Service" is our motto. No packing charges, but we do not pay postage. If you send too much postage we will return the rest or give an extra plant.

We sell our plants as advertised in this catalog and are ready at any time to correct our errors. However, it is mutually agreed between the purchaser and Suhr's Flower Farm that we shall not at any time be liable for more than the amount paid us.

If you are satisfied, tell others; if not, tell us.

Nursery located on Base Line road, one mile east of the 12-Mile corner. Address all correspondence to Suhr's Flower Farm, Troutdale, Oregon, Rt. 2, Box 55.

Don't forget postage. 10c on a dollar is generally enough, except for long distances.



## GNOMES

Gnomes or Brownies, made out of cement, reinforced. Painted in gay colors.  
 Wheelbarrow Man, height 27 inches, \$7.50.  
 Sitting Fisherman, height 25 inches, \$7.50.  
 Small Sitting Fisherman, height 22 inches. \$6.25.  
 Standing Large Fisherman, height 29 inches, \$7.50.  
 Small Gnome, height 17 inches, \$4.00.  
 Frog, large water squatter. \$4.50.  
 Frog, small \$2.00.  
 Turtle water squatter \$4.00.  
 Birdbath, height 20 inches, plate 18 inches, \$4.00.  
 Fountain, height 30 inches, plate 24 inches. \$9.00.  
 Benches, length 52 inches, height 22 inches. \$12.00.  
 Porch Urn, cherry patterns, 13 niches. \$3.00.  
 Porch Urn on foot, 20 inches. \$3.50.  
 Frog Toadstool Fountain, height 12 inches, \$3.00.  
 Toadstool height 20 inches. \$4.50.  
 Packing at cost of material.  
 Shipped by express or freight.  
 Prices f. o. b. Troutdale, Ore.  
 Plaster of Paris Gnomes, 75c up.  
 Also Statues of all kinds.  
 Flower Baskets, Ferneries, Fern Baskets.

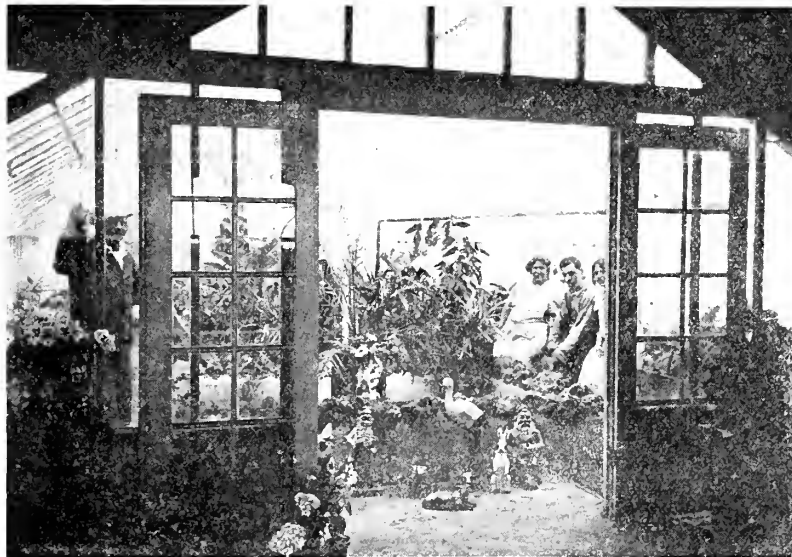
### Our Special Dollar Collections

- 15 Iris, choice colors, one dollar, our choice.
- 4 Roses, our choice, one dollar.
- 10 Dahlias—2 Cactus, 4 Decoratives, 2 Pompons, 2 Peonies—all for one dollar.
- 4 Evergreens. One dollar.
- 4 Flowering Shrubs. One dollar.
- 12 Perennials. One dollar.
- 12 Rock Plants. One dollar.
- 12 Geraniums. One dollar.





Our new Display Room and one of the Greenhouses



Close-up of the "Family" and the Flowers



Where it all started

## SUHR'S FLOWER FARMS

Base Line Road, Mile East of 12-Mile Corner

Mail, TROUTDALE, OREGON, Route 2, Box 372

Telephone Gresham 5228

Telegraph Address, GRESHAM

# **Suhr's Flower Farm**

Base Line Road, Mile East of 12-Mile Corner